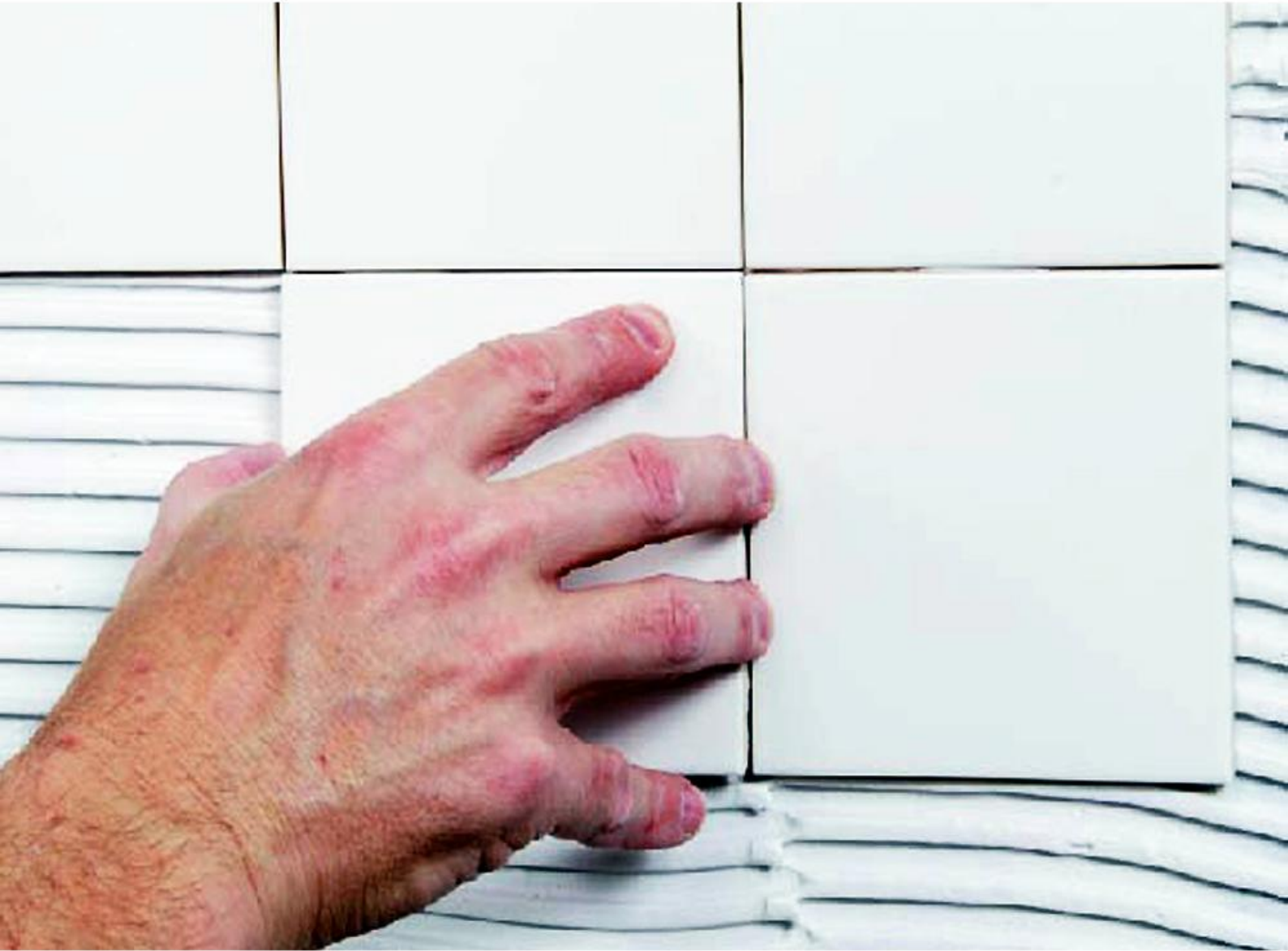


D1TE Tile Adhesive (ready mixed)



TILE ADHESIVE AND GROUT

C1TE Tile Adhesive
C2T Mosaic Fix and Grout
C2TE Super Tile Adhesive
C2TES1 Flex Tile Adhesive
C2TES2 High Flex Tile Adhesive
D1TE Tile Adhesive
CG2 Coloured Grout
Acrylic 60 Liquid Additive



D1TE TILE ADHESIVE

D1TE Tile Adhesive is a high performance, professional formula adhesive with the high bond strengths required for all kinds of tiles and stones installations. Suited for ceramic, mosaic, quarry, pavers, gauged slate, porcelain and gauged stone tile, D1TE provides maximum resistance to intermittent water exposure.

WHERE TO USE

- Interior floors, walls, countertops — do not use in critical water exposure areas
- Concrete, masonry, plaster
- Wallboard in dry areas only
- Exterior grade plywood in dry interior areas
- Existing ceramic tile
- Resilient flooring
- Existing plastic laminates



1) 1gallon/drum, 4drums/carton 2) 30kg/plastic drum

SURFACE PREPARATION

General Surface Preparation:

- Surfaces must be structurally sound, clean, dry and free from grease, oil, dirt, curing compounds, sealers, adhesives and other contaminants that would prevent a good bond.
- Glossy or painted surfaces must be sanded, stripped and cleaned of waxes, dirt and other

contaminants.

- Ambient temperature, surfaces and materials should be 50° – 100° F (10° – 38° C) until adhesive cures.

Cementitious Surfaces:

- Concrete or plaster must be porous, fully cured and must accept water penetration. Test by sprinkling water on various areas of the substrate.
- If water penetrates, then a good bond can be achieved; if water beads, surface contaminants are present, and loss of adhesion may occur.
- Contaminants should be mechanically removed before installation.
- Concrete must be free of efflorescence and not subject to hydrostatic pressure.
- Concrete slabs should have a broomed or brushed finish to enhance the bond.
- Smooth concrete slabs must be mechanically abraded to ensure a good bond.

Plywood Substrates:

Plywood floors must be structurally sound and must meet all ANSI requirements and deflection requirements.

WonderBoard Backerboard:

As a recommended alternative to additional layers of plywood, WonderBoard backerboard may be installed over plywood subfloors. Refer to technical data sheets for installation information.

Existing Ceramic Tile, Resilient Flooring or Plastic Laminates:

Plywood flooring must be structurally sound and must meet all ANSI and deflection requirements. Resilient flooring or plastic laminates must be well bonded, as well as clean and free of all contaminants. Roughen the surface by sanding or scarifying; rinse and allow to dry. Do not sand flooring that contains asbestos. For existing well bonded ceramic tile, mechanically abrade the surface. Rinse and allow to dry. When sanding, an approved respirator should be used.

Expansion Joints:

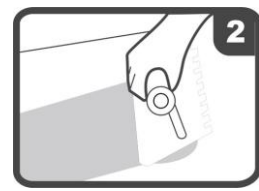
Construction, contraction, expansion and isolation joints as described in ANSI A108.01, should never be bridged with setting material. They must be brought through the tile work and filled with an appropriate elastomeric sealant.

Cutback Adhesive Over Concrete:

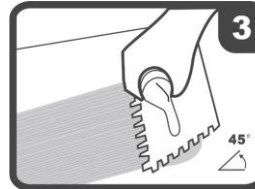
Thick accumulations, powdery, brittle or weak adhesive layers must be removed. Use extreme caution as adhesives may contain asbestos fibers. Do not sand or grind adhesive residue, as harmful dust may result. Never use adhesive removers or solvents, as they weaken or soften the adhesive and may cause it to penetrate into the concrete. The remaining residue should be no thicker than a coat of paint and should be almost transparent. Always install an adequate number of properly located test areas.



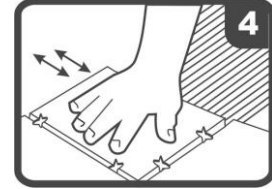
Clean surface



Spread Adhesive



Comb Adhesive



Press tiles firmly



Clean off excess



wait 24 hours before grouting

APPLICATION

- Use a typical notched trowel (see chart) with sufficient depth to ensure proper transfer, covering at least 80% of the tile back.
- Using the flat edge of the trowel, spread the adhesive on the substrate. Apply additional material and comb the surface using the trowel's notched side to achieve an even-setting bed. Do not spread more adhesive than can be covered with tiles within 30 to 45 minutes.
- If skinning occurs, scrape off skin and replace with fresh adhesive.
- Place tiles firmly in position on the fresh adhesive with slight twisting motion to ensure positive bond.
- Make all alignments and adjustments immediately (do not exceed 45 minutes).
- Promptly use water to clean smudges from the face of the tiles while adhesive is still fresh. Once adhesive has dried, clean with mineral spirits.
- Wash hands and tools with water while adhesive is still fresh.
- Allow tiles to reach a firm set, then grout with an appropriate Gomix grout.
- This process should be carried out by hammering with a rubber hammer until there is no air bubble left between tile and the surface.

PRECAUTIONS

- Protect containers from freezing in transit and storage.
- This product is freeze/thaw-stable at temperatures down to 0°F (-18°C). However, protect all water-based products from freezing.
- Provide for heated storage on site and deliver materials at least 24 hours before tilework begins.
- Protect from water until the adhesive has reached its final set.
- Floors: Keep free from general traffic for at least 72 hours after installation. Plywood or stepping boards may be used after 24 hours when occasional stepping on the floor is unavoidable.
- Walls: Protect from impact, vibration and hammering on adjacent and opposite walls for at least 14 days after installation.

CLEAN UP

Remove fresh adhesive from tile surfaces with a damp cloth. Clean tools in warm soapy water.

SHELF LIFE

12 months in its original packing in a dry and cool place

TECHNICAL DATA

PRODUCT INFORMATION	
Open time at 23°C	About 45 to 50 minutes
Drying time at 23°C	24 to 48 hours
Flammability	Nonflammable
Shear strength	Exceeds ANSI A136.1, Type 1
Toxicity	Nontoxic
Freeze/thaw-stable	To -18°C
Slippage(sag)	None
Specific gravity (g/cm³)	1.4
pH	7.8
Cleanability	With water while fresh
Color	White
Shelf life	2 years when stored in original, sealed container at room temperature in a dry area
Health and safety	Consult the Material Safety Data Sheet (MSDS) for safe-handling instructions
TYPICAL TROWELS AND APPROXIMATE COVERAGES	
Notched trowel 4.5x4.5mm	3.72 to 5.57 m ² / 1 gallon D1TE
Notched trowel 6x6x6 mm	2.32 to 3.44 m ² / 1 gallon D1TE

* Trowel dimensions are width/depth/space. Coverages shown are for estimating purposes only. Actual job-site according to the type of trowel used, substrate conditions and setting practices.

HANDLING PRECAUTION GOMIX products are generally safe provided they are used as instructed and that certain precautions normally taken when handling chemicals are observed eg, do not allow any material to come into contact with foodstuffs. Avoid contact with skin. Do not swallow. Always read the safety information on the pack and the Safety Data Sheet before use.

IMPORTANT NOTE The information given in this data sheet is based on both current development work and many years' field experience. Whilst every effort is made to ensure that the information is reliable we cannot accept responsibility for any work carried out with our materials where we have no control over methods of application, site conditions etc.

For further information consult our Technical Department

GoMix Co., Limited

Hong Kong Office: Bright Way Tower 33 Mong Kok Rd Mong Kok KL HK

Guangzhou Office: Rm 717-718, Huaerdun Hotel, #557, Xinshi R, Baiyun, Guangzhou, China

Tel.: 0086 20 6106 9818

Email: hkgomix@gmail.com

Fax: 0086 20 6106 9819

Web.: <http://www.gomixcoat.com>

