

C1TE Tile Adhesive



TILE ADHESIVE AND GROUT

C1TE Tile Adhesive
C2T Mosaic Fix and Grout
C2TE Super Tile Adhesive
C2TES1 Flex Tile Adhesive
C2TES2 High Flex Tile Adhesive
D1TE Tile Adhesive
CG2 Coloured Grout
Acrylic 60 Liquid Additive



C1TE TILE ADHESIVE

A premium grade, thick or thin bed, fast setting, polymer modified, flexible, powdered cement based adhesive, specifically formulated to bond tiles onto a variety of substrates. Classified as BS EN 12004 Type C1.

FEATURES AND BENEFITS

- Excellent performance and slump resistance
- For internal and external applications
- Suitable for ceramic tiles and most natural stones
- Versatile multi-purpose tile adhesives
- Fast setting - cures in 6-8 hours
- Ideal for same day grouting
- Strong adhesive force, safer and firmer compared with traditional cement.
- Favorable leakage and aging resistant performance
- Adhere tile in thin layer; reduce burden of walls
- Can be directly used for leveling rough and uneven substrate or smooth cement floor

WHERE TO USE

- C1TE Tile Adhesive can be used on both walls and floors in interior and exterior applications.
- C1TE Tile Adhesive can be used to fix tiles onto concrete, cement renders/screeds, blockwork, rendered brickwork, plasterboard, fibre cement sheeting and particular waterproofing membranes.
- C1TE Tile Adhesive is recommended for the thin or thick bed fixing of all types of ceramic, mosaic, fully vitrified, porcelain, terracotta, slate, quarry, granite and marble tiles, with the exception of green marble.
- When using C1TE Tile Adhesive with translucent tiles the colour of the adhesive must be considered.

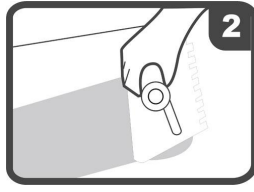
SURFACE PREPARATION

- All surfaces must be structurally sound, dry, clean and free from movement, oil, grease, wax, curing compounds and any other loose or contaminating materials.
- All building boards must be flat and firmly fixed.
- Painted surfaces must be scabbled/abraded to expose at least 80% of the original substrate.
- Newly rendered/screeded surfaces must be allowed to cure for at least 24 hours and have a wood float finish.
- Old rendered/screeded surfaces must be thoroughly cleaned prior to tiling and have a wood float finish.
- New concrete must be allowed to cure for 1 week and should have a wood float finish.
- Steel trowel finished concrete must be acid etched or mechanically abraded prior to tiling.
- Old concrete surfaces must be thoroughly cleaned prior to tiling.
- Make sure all release agents are removed from concrete surfaces, especially on tilt-up slabs.

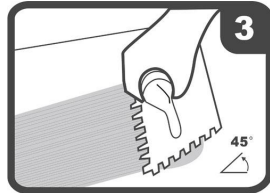




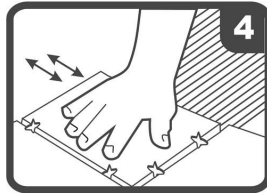
Clean surface



Spread Adhesive



Comb Adhesive



Press tiles firmly



Clean off excess



wait 24 hours before grouting

MIXING

- Add C1TE Tile Adhesive to a bucket of clean water mixing constantly with electric mixer until a thick creamy consistency is achieved.
- The mixing ratio is 20kg of C1TE Tile Adhesive to approximately 5 liters of water.
- Allow the mixture to stand for 10 minutes, remix, and then apply the adhesive.

APPLICATION

- Spread the adhesive onto the substrate using a 6mm x 6mm notched trowel for the installation of wall tiles up to 150mm x 150mm.
- For the installation of floor tiles or wall tiles larger than 150mm x 150mm use a 10mm x 10mm to a 12mm x 12mm notched trowel.
- Tiles with lugs, grooves or an uneven back must initially be butter coated with the adhesive, in addition to the adhesive being troweled onto the substrate.
- A 6mm x 6mm-notched trowel can be used to lay mosaic tiles.
- For wall tiling a minimum final bed thickness of

2mm is recommended, whilst for floor tiling a minimum final bed thickness of 3mm is recommended.

- Do not spread more than 1 sqm of adhesive once.
- Press tiles firmly into position before the adhesive skins, ensuring that all the tiles are well bedded and that no voids occur under the tiles.
- Occasionally, in order to ensure that full coverage is being maintained, tile should be removed once adhesive is not enough for thoroughly laid. This tile should be re-laid accordingly.
- Once the tile has been laid, it must not be disturbed or under foot traffic for 6 hours at 20°C.
- This process should be carried out by hammering with a rubber hammer until there is no air bubble left between tile and the surface.

GROUTING

- Grouting can be carried out 6-8 hours after completion of tiling.
- Apply GoMix CG2 tile grout is recommended for tiling installation. Refer to the GoMix Tile Adhesive and Grout Selection Guide for further information.
- Allow 24 hours after grouting before putting the area into service.

DOSAGE

The dosage differs according to the actual condition of the project.

- 2-3kg/m² if the 3 X 3mm scraper is used
- 3-5kg/m² if the 6 X 6mm scraper is used
- 5-7kg/m² if the 10 X 10mm scraper is used
- Less dosage for the even surface.

PRECAUTION

- Allow 24 hours curing time before exposing to light foot traffic.
- Do not apply C1TE Tile Adhesive in temperatures above 40°C or below 5°C.
- Do not allow the adhesive to surface dry prior to laying the tiles. If the adhesive becomes surface dry, remove and dispose it, then re-apply new adhesive.
- C1TE Tile Adhesive is not suitable for fixing tiles directly onto wooden floors.

- For application of C1TE Tile Adhesive in circumstances not mentioned in these TDS, please contact GoMix for further details.
- Wearing gloves and safety goggles is recommended while applying C1TE Tile Adhesive since cement content may cause dermatitis.
- For MSDS, contact GoMix for further details.

CLEAN UP

- Remove any excess adhesive from the surface of the tiles with a damp cloth, while the adhesive is

still wet.

- Clean tools and equipment with water before the adhesive dries.

PACKAGING

- C1TE Tile Adhesive is available in 20kg craft sacks.

SHELF LIFE

- Up to 12 months in unopened bags, stored in an elevated, cool dry place

TECHNICAL INFORMATION

PRODUCT INFORMATION	
FORM	Powder
COLOUR(S)	Grey or White
HAZARD INFORMATION	IRRITANT – Consult Safety Datasheet before use
POTLIFE	Approx. 60 minutes @ 20°C
OPEN TIME	20 minutes@ 20°C
COVERAGE	6-10kgs/square meter
TENSILE ADHESION STRENGTH	≥1MPa under all test conditions
OPEN TIME	Approximately 10 minutes
EARLY TENSILE ADHESION STRENGTH	≥0.8MPa after 6 hours
CLASSIFICATION	BS EN 12004 Type C1

HANDLING PRECAUTION GOMIX products are generally safe provided they are used as instructed and that certain precautions normally taken when handling chemicals are observed eg, do not allow any material to come into contact with foodstuffs. Avoid contact with skin. Do not swallow. Always read the safety information on the pack and the Safety Data Sheet before use.

IMPORTANT NOTE The information given in this data sheet is based on both current development work and many years' field experience. Whilst every effort is made to ensure that the information is reliable we cannot accept responsibility for any work carried out with our materials where we have no control over methods of application, site conditions etc.

For further information consult our Technical Department

GoMix Co., Limited

Hong Kong Office: Bright Way Tower 33 Mong Kok Rd Mong Kok KL HK

Guangzhou Office: Rm 717-718, Huaerdun Hotel, #557, Xinshi R, Baiyun, Guangzhou, China

Tel.: 0086 20 6106 9818

Email: gomix@gomixcoat.com

Fax: 0086 20 6106 9819

Web.: <http://www.gomixcoat.com>

