

C2TE Super Tile Adhesive



TILE ADHESIVE AND GROUT

C1TE Tile Adhesive
C2T Mosaic Fix and Grout
C2TE Super Tile Adhesive
C2TES1 Flex Tile Adhesive
C2TES2 High Flex Tile Adhesive
D1TE Tile Adhesive
CG2 Coloured Grout
Acrylic 60 Liquid Additive



C2TE SUPER TILE ADHESIVE

C2TE Super Tile Adhesive is a white/grey, premium grade, polymer fortified and reinforced adhesive specifically designed for big size high quality porcelain, stone and marble installations.

FEATURES AND BENEFITS

- Polymer fortified – provides high bond strength and gives excellent adhesion to all types of porous and non-porous tiles and stone, especially suitable for both internal and external adhering of big size tiles, vitreous tiles and natural stones.
- High bond strength and slump resistance
- Long repositioning allowing more time to move tiles/natural stone into the correct position.
- Flexibility can absorb expansion due to the temperature differences.
- Excellent water-resistant -suitable for swimming pools and other wet locations
- BS EN 12004 Type C2TE



WHERE TO USE

- C2TE Super Tile Adhesive can be used on both walls and floors, interior and exterior applications.
- C2TE Super Tile Adhesive can be used to fix tiles

onto concrete, cement renders/screeds, blockwork, rendered brickwork and particular waterproofing membranes.

- C2TE Super Tile Adhesive can be used for fixing wall tiles onto flexible building boards such as fibre cement sheet.
- C2TE Super Tile Adhesive is recommended for the thin or thick bed fixing of all types of ceramic, mosaic, vitrified, porcelain, terracotta, slate, quarry, natural stone, granite and marble tiles (especially white marble), with the exception of green marbles.

SURFACE PREPARATION

- All surfaces must be structurally sound, dry, clean and free from movement, oil, grease, wax, curing compounds and any other loose or contaminating materials.
- All building boards must be flat and firmly fixed.
- Painted surfaces must be scabbled/abraded to expose at least 80% of the original substrate.
- Newly rendered/screeded surfaces must be allowed to cure for at least 24 hours and have a wood float finish.
- Old rendered/screeded surfaces must be thoroughly cleaned prior to tiling and have a wood float finish.
- New concrete must be allowed to cure for 1 week and should have a wood float finish.
- Steel trowel finished concrete must be acid etched or mechanically abraded prior to tiling.
- Old concrete surfaces must be thoroughly cleaned prior to tiling.
- Make sure all release agents are removed from concrete surfaces, especially on tilt-up slabs.

MIXING

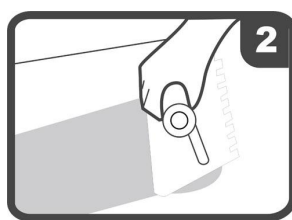
- Add C2TE Super Tile Adhesive to a bucket of clean water mixing constantly with electric mixer until a thick creamy consistency is achieved.
- The mixing ratio is 20kg of C2TE Super Tile Adhesive to approximately 5 liters of water.
- Allow the mixture to stand for 10 minutes, remix, and then use the adhesive.

APPLICATION

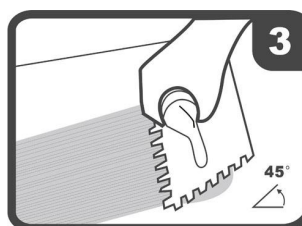
- Spread the adhesive onto the substrate using a 6mm x6mm notched trowel for the installation of wall tiles up to 150mm x 150mm.
- When laying tiles which are larger than 400mm x400mm in size, GoMix recommend the use of a 12mm x 12mm notched trowel as a minimum –back buttering of the tile may also be necessary to ensure greater than 90% coverage is achieved.
- Can spread up to 1 sqm of adhesive once on properly primed surfaces.
- Press tiles firmly into position before the adhesive skins, ensuring that all the tiles are well bedded and that no voids occur under the tiles.
- Occasionally, in order to ensure that full coverage is being maintained, tile should be removed once adhesive is not enough for thoroughly laid. This tile should be re-laid accordingly.
- Once the tile has been laid, it must not be disturbed or under foot traffic for 6 hours at 20°C.
- This process should be carried out by hammering with a rubber hammer until there is no air bubble left between tile and the surface.



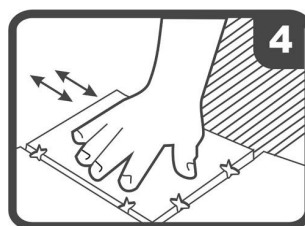
Clean surface



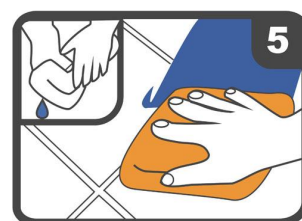
Spread Adhesive



Comb Adhesive



Press tiles firmly



Clean off excess



wait 24 hours before grouting

GROUTING

- Grouting can be carried out 6-8 hours after completion of tiling.
- Apply GoMix CG2 tile grout is recommended for tiling installation. Refer to the GoMix Tile Adhesive and Grout Selection Guide for further information.
- Allow 24 hours after grouting before putting the area into service.

DOSAGE

The dosage differs according to the actual condition of the project.

- 2-3kg/m² if the 6 X 6mm scraper is used
- 3-5kg/m² if the 10 X 10mm scraper is used
- 5-7kg/m² if the 12 X 12mm scraper is used
- Less dosages for the even surface

PRECAUTIONS

- Allow 24 hours curing time before exposing to light foot traffic.
- Do not apply C2TE Super Tile Adhesive in temperatures above 40°C or below 5°C.
- Do not allow the adhesive to surface dry prior to laying the tiles. If the adhesive becomes surface dry, remove and dispose it, then re-apply new adhesive.
- C2TE Super Tile Adhesive is not suitable for fixing tiles directly onto wooden floors.
- For application of C2TE Super Tile Adhesive in circumstances not mentioned in these TDS, please contact GoMix for further details.
- Wearing gloves and safety goggles is recommended while applying C2TE Super Tile Adhesive since cement content may cause dermatitis.
- For MSDS, contact GoMix for further details.

CLEAN UP

- Remove any excess adhesive from the surface of the tiles with a damp cloth, while the adhesive is still wet.
- Clean tools and equipment with water before the adhesive dries.

PACKAGING

- C2TE Super Tile Adhesive is available in 20kg craft sacks.

SHELF LIFE

- Up to 12 months in unopened bags, stored in an elevated, cool dry place.

TECHNICAL INFORMATION

PRODUCT INFORMATION	
FORM	Powder
POTLIFE	Approx. 90 minutes @ 20°C
OPEN TIME	30 minutes@ 20°C
COVERAGE	6-10kgs/square meter
TENSILE ADHESION STRENGTH	≥1.5MPa under all test conditions
EARLY TENSILE ADHESIION STRENGTH	≥1.0MPa after 6 hours
CLASSIFICATION	BS EN 12004 Type C2TE

HANDLING PRECAUTION GoMix products are generally safe provided they are used as instructed and that certain precautions normally taken when handling chemicals are observed eg, do not allow any material to come into contact with foodstuffs. Avoid contact with skin. Do not swallow. Always read the safety information on the pack and the Safety Data Sheet before use.

IMPORTANT NOTE The information given in this data sheet is based on both current development work and many years' field experience. Whilst every effort is made to ensure that the information is reliable we cannot accept responsibility for any work carried out with our materials where we have no control over methods of application, site conditions etc

For further information consult our Technical Department

GoMix Co., Limited

Hong Kong Office: Bright Way Tower 33 Mong Kok Rd Mong Kok KL HK

Guangzhou Office: Rm 717-718, Huaerdun Hotel, #557, Xinshi R, Baiyun, Guangzhou, China

Tel.: 0086 20 6106 9818

Email: gomix@gomixcoat.com

Fax: 0086 20 6106 9819

Web.: <http://www.gomixcoat.com>

