

# C2TES1 Flex Tile Adhesive



## TILE ADHESIVE AND GROUT

C1TE Tile Adhesive  
C2T Mosaic Fix and Grout  
C2TE Super Tile Adhesive  
C2TES1 Flex Tile Adhesive  
C2TES2 High Flex Tile Adhesive  
D1TE Tile Adhesive  
CG2 Coloured Grout  
Acrylic 60 Liquid Additive



# C2TES1 FLEX TILE ADHESIVE

C2TES1 Flex Tile Adhesive is a white/grey, mono-component, high performance, flexible, lightweight, cementitious adhesive with no vertical slip and long open time, low dust technology and extremely high yield. Easy to apply by trowel with excellent wetting-out properties, for stone ceramic tiles, and thin porcelain gres tiles.

## **FEATURES AND BENEFITS**

- Ideal for fixing large sized ceramic tiles, porcelain and natural tiles, granite marble on wall and floor.
- Resistant to outdoor weather conditions;
- 3-20mm bed thickness;
- Easy preparation and application;
- Excellent adhesion;

## **WHERE TO USE**

- Bonding all types and sizes of ceramic tiles (doublefired, single-fired, porcelain, klinker, terracotta, etc.) on uneven internal and external substrates, without having to even out the surface before fixing.
- Bonding natural stones on internal and external surfaces (for stone which is stable and not sensitive to humidity).
- Bonding thin porcelain gres tiles



## **SURFACE PREPARATION**

- Substrates must be mechanically strong, free of loose parts, grease, oil, paintwork etc. and must be sufficiently dry.
- Cementitious substrates must not shrink after fixing tiles. Therefore, in good weather, render must be cured for at least one week per cm of thickness, and cementitious screeds must be cured for at least 28 days.
- If the surface is too hot due to direct sunlight, cool it down with water.
- Gypsum substrates and anhydrite screeds must be perfectly dry, hard enough for the final intended use and free of dust and laitance. They must also be treated with GoMix S1 Primer, while areas subject to high humidity.
- Substrates on which thin porcelain gres is to be laid must be perfectly flat. Therefore, where necessary, even out the substrate before laying the floor with a self-levelling smoothing and levelling compound.

## **MIXING**

- Blend GoMix C2TES1 Flex Tile Adhesive with clean water to obtain a smooth, lump-free mix.
- Let the mix stand for approximately 5 minutes, then blend again.
- Approximately 5 litres of water are required for each 20 kg bag.
- When blended as described above, the mix lasts for approximately 8 hours.

## **APPLICATION**

### **Applying the mix**

- Apply GoMix C2TES1 Flex Tile Adhesive on the substrate using a notched trowel. Use a trowel with a notch size which guarantees complete buttering of the back of the tile.
- To guarantee a good bond, apply a thin layer of C2TES1 on the substrate using the smooth side of the trowel, then immediately apply a further layer of C2TES1 to the thickness required using a suitable



trowel, according to the type and size of the tiles.

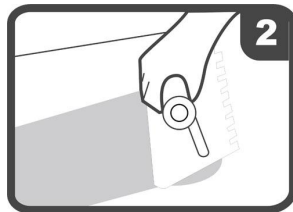
- When laying external flooring, for tile sizes larger than 900 cm<sup>2</sup> and floors subject to heavy loads, spread the adhesive also on the back of the tile to ensure complete buttering.

### Laying the tiles

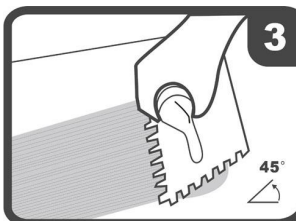
- The tiles do not need to be wet before they are laid. However, if the back faces are particularly dusty, dip them into clean water.
- Ensure the tiles are dry before fixing. When laying tiles, apply a firm pressure to guarantee good contact.
- The open time for GoMix C2TES1 is at least 30 minutes in normal weather and humidity conditions.
- When conditions are not ideal (direct sunlight, dry wind, high temperatures, etc.), or if the substrate is particularly absorbent, this time may be reduced to only a few minutes.
- Final adjustment of the tiles must be carried out within 45 minutes of laying.
- Tiles laid using GoMix C2TES1 must be protected from water and rain for at least 24 hours and from freezing weather and direct sunlight for at least 5 to 7 days.



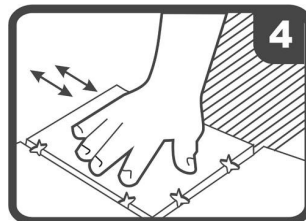
Clean surface



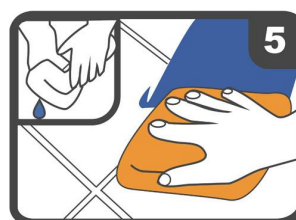
Spread Adhesive



Comb Adhesive



Press tiles firmly



Clean off excess wait 24 hours before grouting

### GROUTING

- Tile joints may be grouted after 4 to 8 hours on walls and after 24 hours on floors.
- Use GoMix CG2 Coloured Grout, available in a wide variety of colours.

### DOSAGE

- The approximate coverage amount (kg/M<sup>2</sup>) may vary depending on the application surface, tile size and bed of adhesive.
- 6-10kgs/square meters suggested.

### PRECAUTIONS

Do not use GoMix C2TES1 in the following cases:

- on metal, rubber, PVC and linoleum;
- for slabs of marble and natural stone which are subject to efflorescence or staining;
- for natural stone or composite slabs subject to moisture movement caused;
- when the floored surface must be put quickly back into service.
- do not use GoMix C2TES1 for fixing thin porcelain gres slabs with a surface areas greater than 3600 cm<sup>2</sup>. GoMix C2TES2 High Flex Tile Adhesive must be used for this type of application.
- Do not add water to the mix once it starts to set.

### CLEAN UP

- Tools and containers may be cleaned using water while GoMix C2TES1 is still fresh.
- Clean the surfaces of the floor using a damp cloth before the adhesive sets.

### PACKAGING

C2TE Super Tile Adhesive is available in 20kg craft sacks.

### SHELF LIFE

- GoMix C2TES1 Flx Tile Adhesive may be stored for up to 12 months in its original packaging in a dry place.
- Production date is displayed on the packaging.
- Maximum 10 craft bags should be overlaid for storage.

**SAFETY INSTRUCTIONS**

- Avoid eye or skin contact due to cement content.
- Rinse exposed areas with plenty of water.
- Use protective gloves and goggles.
- The product should not be inhaled. Dust mask should be used if necessary.
- Keep the product away from the reach of children.
- Consult your doctor when necessary.
- For further information, please refer to the Safety Data Sheet.

**TECHNICAL INFORMATION**

<b>PRODUCT INFORMATION</b>	
<b>BULK DENSITY (KG/M3)</b>	870
<b>DRY SOLIDS CONTECT (%)</b>	100
<b>APPLICATION DATA (@ +23°C - 50% R.H.)</b>	
<b>DENSITY OF THE MXI (KG/M3):</b>	1,200
<b>POT LIFE OF MIX:</b>	more than 8 hours
<b>OPEN TIME (ACCORDING TO EN 1346):</b>	> 30 minutes
<b>ADJUSTMENT TIME:</b>	45 minutes
<b>GROUTING TILE JOINTS ON WALLS:</b>	after 4-8 hours
<b>GROUTING TILE JOINTS ON FLOORS:</b>	after 24 hours
<b>SET TO LIGHT FOOT TRAFFIC:</b>	24 hours
<b>READY FOR USE:</b>	14 days
<b>CLASSIFICATION</b>	BS EN 12004 Type C2TE S1
<b>BOND STRENGTH ACCORDING TO EN 1348 (N/mm2):</b>	– initial bond (after 28 days): 2 – bond after application of heat source: 2 – bond strength after immersion in water: 1.3 – bond strength after freeze-thaw cycles: 1.5
<b>RESISTANCE TO ALKALIS:</b>	excellent
<b>RESISTANCE TO OILS:</b>	excellent (poor with vegetable oils)
<b>RESISTANCE TO SOLVENTS:</b>	excellent
<b>IN SERVICE TEMPERATURE RANGE:</b>	from -30°C to +90°C
<b>DEFORMABILITY ACCORDING TO EN 12002:</b>	S1 - deformable (> 2.5 mm, < 5 mm)

For further information consult our Technical Department

**GoMix Co., Limited**

**Hong Kong Office:** Bright Way Tower 33 Mong Kok Rd Mong Kok KL HK

**Guangzhou Office:** Rm 717-718, Huaerdun Hotel, #557, Xinshi R, Baiyun, Guangzhou, China

Tel.: 0086 20 6106 9818

Email: [gomix@gomixcoat.com](mailto:gomix@gomixcoat.com)

Fax: 0086 20 6106 9819

Web: <http://www.gomix.cn>

