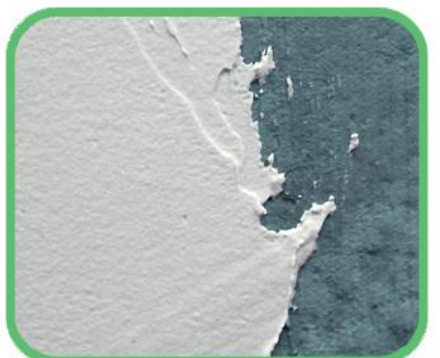
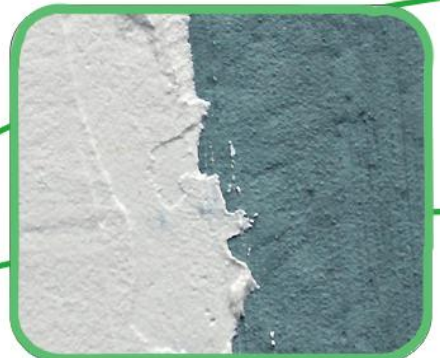
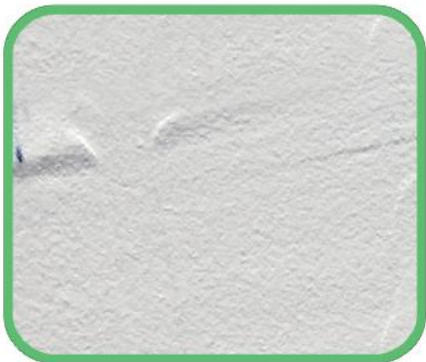


WALL PUTTY

R2 Finish Putty

- B2 Gypsum Plaster
- C475 Joint Compound
- R1 Smooth Putty
- R2 Finish Putty
- R3 Coarse Putty
- R4 Flex Putty
- GM11 Interior Acrylic Putty
- GM12 Exterior Acrylic Putty



R2 FINISH PUTTY

R2 Finish Putty contains high quality Portland cement, mineral-based filling materials, and special binders which provides resistance to water, humidity and dampness and ensures plasticity.

It also provides crackles application for all types cement based surface repairs and application.

FEATURES AND BENEFITS

- Crackless application.
- Mixes easily with potable water.
- Ideal for smoothing and concrete surfaces.
- Ideal for walls before painting.
- Weather resistant—doesn't deteriorate with age.
- Adds aesthetic value to any building.
- Surface smoothing of up to 4 mm on walls.

APPLICATION AREAS

- Ideal for use in high moisture areas such as showers, bathrooms, swimming pool dressing rooms, laundry rooms, locker rooms.
- Concrete surfaces
- Cement based mortars
- Light or heavy bricks or briquette blocks
- Do not apply on wood, gypsum, fibrous cements, and porous concrete surfaces without primer.



SURFACE PREPARATION

- New Portland cement substrates should be properly cured prior to application of R2 Finish Putty (approximately 7 days).
- All receiving surfaces must be structurally sound, clean, and free of dust, dirt, silicones, paint products, efflorescence or any other contaminant which could impair the natural bond.
- Surface defects, such as cracks, holes or voids should be repaired prior to application.
- Basecoat should be plum, level, and square to prevent uneven thickness of R2 Finish Putty.

MIXING

- R2 Finish Putty should be mechanically mixed for approximately 10 to 15 minutes to provide maximum workability.
- 8 liters of clean water per 20kg sack will be necessary.
- Add approximately 1/2 of the required water to the mixer. With the blades running, carefully add the R2 Finish Putty.
- Allow ample time for initial mixing, add remaining mix water, and complete mixing to produce a smooth, workable consistency.

NOTE: For maximum strength and increased moisture resistance, add Gomix Acrylic Latex to the mix water using a 3:1 ratio (3 parts water/1 part Latex).

APPLICATION

- R2 Finish Putty is applied up to a thickness 0.8-1.5 mm using a plain steel trowel.
- A second layer should be applied for thickness up to 0.8-1.5mm.
- The surface should be slightly damped with water spraying method when the surface begins to dry while smoothing.
- The surface should be slightly damped with water spraying method 2 to 3 hours after application of R2 Finish Putty on windy, dry or sunny days in open air. This would prevent any possible cracks due to sudden dryness.

- Allow material to hydrate (begin to lose its moisture to the basecoat and to the ambient air) and then trowel it well, firmly compacting the material with water, free from catfaces and/or other blemishes or irregularities.
- R2 Finish Putty should be applied true and even without imperfections which can be attributed to the applicator's work and materials.
- A top quality plastering job requires not only top-grade materials, but careful planning and application techniques. Do not deviate from instructions.

DOSAGE

- 1 – 1.2kg/m² per mm of thickness, depending on thickness and condition of basecoat.
- Few dosages for the even surface

PACKAGING

- R2 Finish Putty is available in 20kg craft sacks.

PRECAUTIONS

- Do not apply R2 Finish Putty in applications if the prevailing outside temperature is below 40°F (4°C) or is forecast to fall below 40°F (4°C) within 24 hours after application.
- Moist curing may be necessary during hot/dry weather conditions.
- Do not apply R2 Finish Putty for application over 4 mm in thickness.
- Water should be added to the mixture more or less than the specification on the bag or technical data sheets.

SHELF LIFE

- Up to 12 months in unopened bags, stored in an elevated, cool dry place.

TECHNICAL DATA

| Physical state and appearance | |
|--|--|
| Form | Gray or white powder |
| Base | Portland cement |
| Bulk density of powder | 1, 2g/cm ³ |
| pH | Wet mix >12 |
| Application properties | |
| Mixture rate | 350g-370g Water/1000g powder (35%-37%) |
| Open time | 3 hours |
| Application thickness | 1.5-4 mm |
| Surface drying time | (23°C, %50RH) 30 minutes |
| Application temperature | +5°C - +40°C |
| Rest time before painting | 3 days |
| Mechanical resistance to pressing | > 20 Mpa |
| Surface adherence (28 days later) | 2.5 Mpa (Ambient temperature of 23°C, %50RH) |

For further information consult our Technical Department

GoMix Co., Limited

Hong Kong Office: Bright Way Tower 33 Mong Kok Rd Mong Kok KL HK

Guangzhou Office: Rm 717-718, Huaerdun Hotel, #557, Xinshi R, Baiyun, Guangzhou, China

Tel.: 0086 20 6106 9818

Email: hkgomix@gmail.com

